

NOTES:

STIRRUPS IN CAP MAY BE SHIFTED AS NECESSARY TO CLEAR DOWELS.

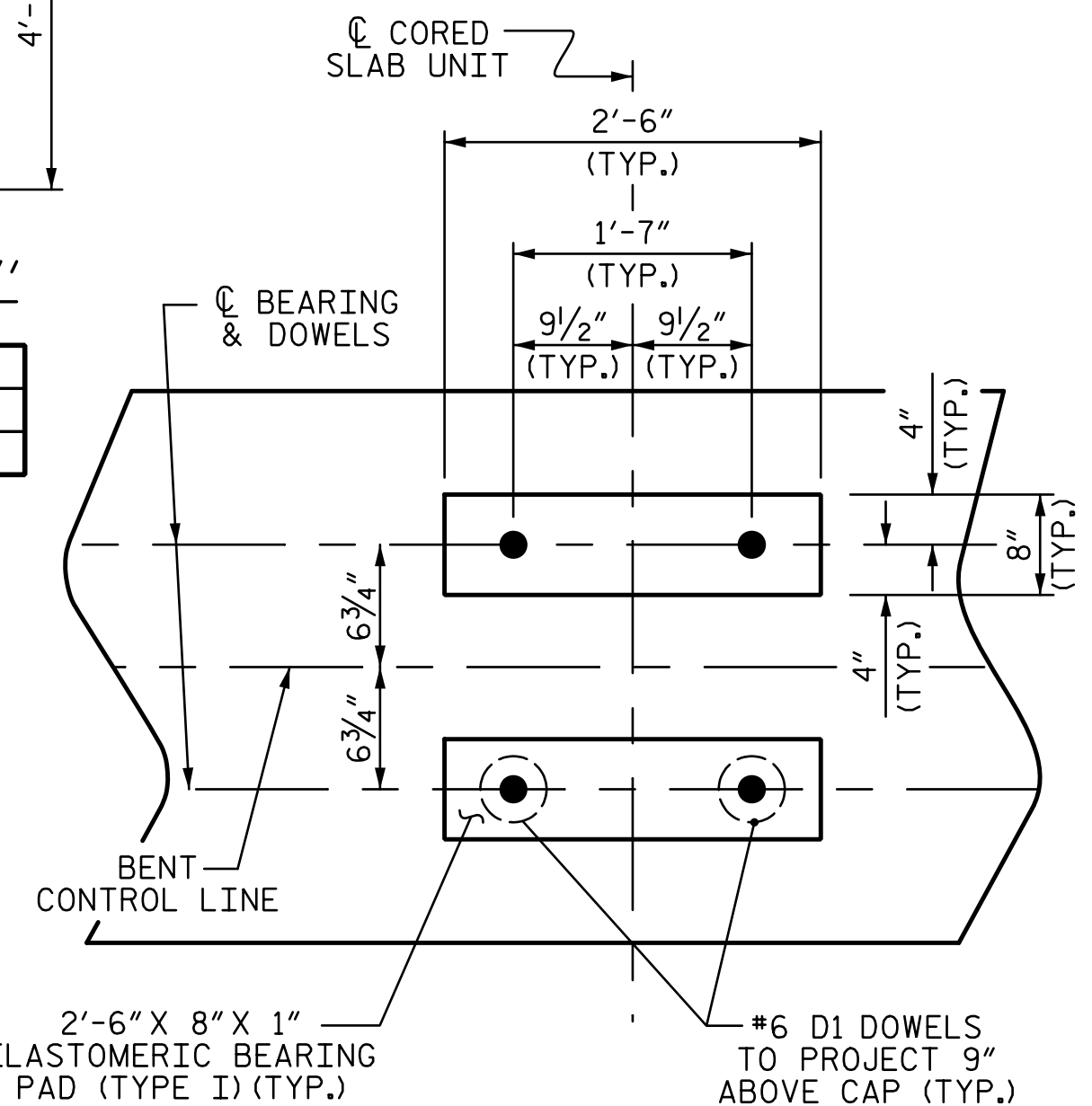
★ INVERT ALTERNATE STIRRUPS.

FOR ADDITIONAL REINFORCING STEEL IN PP 24 x 0.50 GALVANIZED STEEL PILES, SEE SHEET 3 OF 3.

GALVANIZE THE TOP OF EACH INTERIOR BENT PILE A MINIMUM OF 34 FEET. GALVANIZE IN ACCORDANCE WITH SECTION 1076 OF THE STANDARD SPECIFICATIONS.

FOR CONSTRUCTION JOINT DETAIL, SEE SHEET 2 OF 3.

FOR DETAILS ON CONSTRUCTION STAGING, SEE CONSTRUCTION STAGING SHEETS.



DETAIL "A"

(DIMENSIONS ARE TYPICAL EACH BEARING)

CAP ELEVATIONS		
	BENT 1	BENT 2
"A"	1745.70	1746.12
"B"	1744.28	1744.70
"C"	1741.70	1742.12
"D"	1740.28	1740.70

TOP OF PILE ELEVATIONS		
PILE NO.	BENT 1	BENT 2
P1	1743.56	1743.98
P2	1743.04	1743.46
P3	1742.84	1743.26
P4	1742.48	1742.90

PROJECT NO. DF18314.2045332

HENDERSON COUNTY

STATION: 13+70.81 -L-

SHEET 1 OF 3



STATE OF NORTH CAROLINA
DEPARTMENT OF TRANSPORTATION
RALEIGH
SUBSTRUCTURE

BENT 1
& BENT 2

REVISIONS						SHEET NO.
NO.	BY:	DATE:	NO.	BY:	DATE:	
1			3			S-24
2			4			TOTAL SHEETS 32

DRAWN BY : M. KHIN DATE : 01/2025
CHECKED BY : M. ACOSTA DATE : 01/2025
DESIGN ENGINEER OF RECORD: M. ACOSTA DATE : 03/2026

(FOR SECTION A-A, SEE SHEET 2 OF 3)
(PILES AND DRILLED PIERS SHOWN FOR BENT 1, EXISTING PILES AND DRILLED PIERS FOR BENT 2 TO BE RETAINED)
(SEE CONSTRUCTION SEQUENCE AND FOUNDATION LAYOUT FOR ADDITIONAL DETAILS AND LOCATIONS FOR EXISTING BENT 2 PILES)
*** 2'-6" MIN. SPLICE (#4 BARS), 3'-1" MIN. SPLICE (#5 BARS)

DOCUMENT NOT CONSIDERED
FINAL UNLESS ALL
SIGNATURES COMPLETED